



APPLICATION

Universal pumps for domestic or municipal water supply systems, for clean non-explosive liquids without solid or abrasive substances, for agricultural irrigation and sports application, for civil and industrial use, boiler feeding and condensate systems and for high pressure washing plants.

OPERATING CONDITIONS

- Liquid temperature up to 35°C (for home use according to EN 60335-2-41)
Temperature max. liquid: 110°C (for other uses)
- Ambient temperature max to 40°C

MOTOR

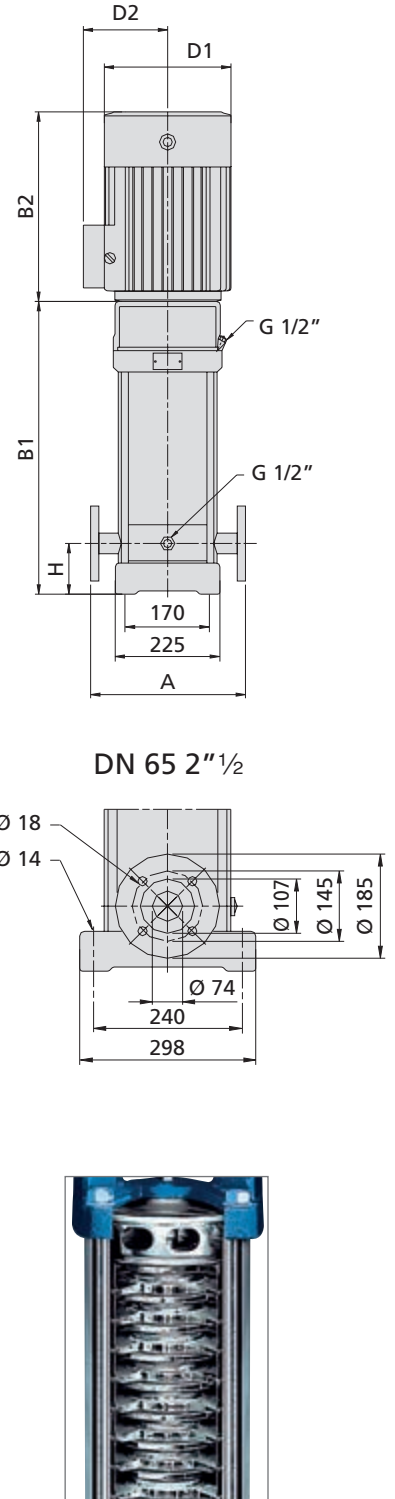
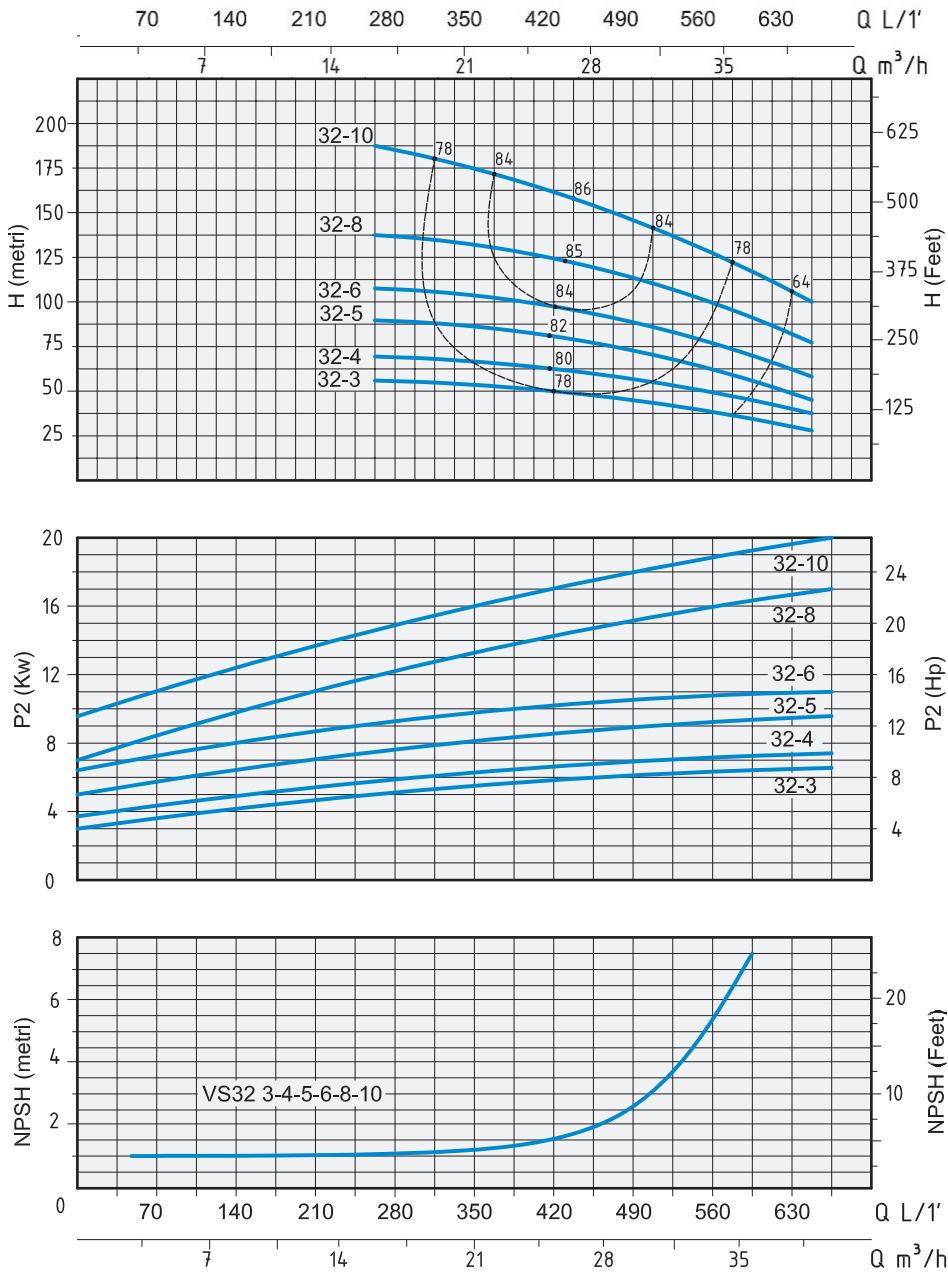
- Three-phase 230/400V-50Hz P2 ≤ 7,5 kW
- Three-phase 400/690V-50Hz P2 > 7,5 kW
- Two-pole electric standard motor (n = 2900 min⁻¹)
- Insulation Class F
- Protection IP 55

MATERIALS

- Suction casing *Stainless Steel AISI 304*
- Delivery casing *Stainless Steel AISI 304*
- Impeller *Stainless Steel AISI 304*
- External jacket *Stainless Steel AISI 304*
- Upper cover *Stainless Steel AISI 304*
- Lower cover *Stainless Steel AISI 304*
- Pump shaft *Stainless Steel AISI 304*
- Mechanical seal *Silicon/Silicon/Viton*



TYPE	NOMINAL POWER		AMPERE	Q = CAPACITY										
	HP	kW		Total head in meters w.c.										
Three-phase	P2		Three-phase	m ³ /h	16	20	22	24	26	28	30	32	35	40
				lt/1'	266	333	366	400	433	466	500	573	583	666
VS 32-3	7,5	5,5	10,7	H (m)	54	51	49	48	46	44	42	36	35	27
VS 32-4	10	7,5	14,5		72	69	67	65	63	60	57	49	48	37
VS 32-5	15	11	16		90	86	84	81,5	79	76	72	63	61	47
VS 32-6	15	11	19,4		108	106	103	100	97	93	89	79	77	57
VS 32-8	20	15	24,5		144	139	135,5	132	127	122	117	102	100	77
VS 32-10	25	18,5	32		182	175	171	166	160	153	145	124	120	98



TYPE	DIMENSIONS mm							FLANGE	DIMENSIONS mm			WEIGHT Kg
	A	H	B1	B2	B1 + B2	D1	D2		P	L	H	
Three-phase												
VS 32-3	320	105	645	430	1075	260	208	DN 65 2" 1/2	417	1215	444	120,2
VS 32-4	320	105	715	430	1145	260	208	DN 65 2" 1/2	417	1215	444	130,8
VS 32-5	320	105	890	490	1380	330	255	DN 65 2" 1/2	515	1515	493	218,1
VS 32-6	320	105	960	490	1450	330	255	DN 65 2" 1/2	515	1515	493	222,1
VS 32-8	320	105	1100	490	1590	330	255	DN 65 2" 1/2	515	1715	490	241,5
VS 32-10	320	105	1240	550	1790	330	255	DN 65 2" 1/2	515	1915	495	264